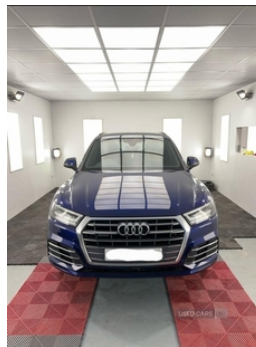
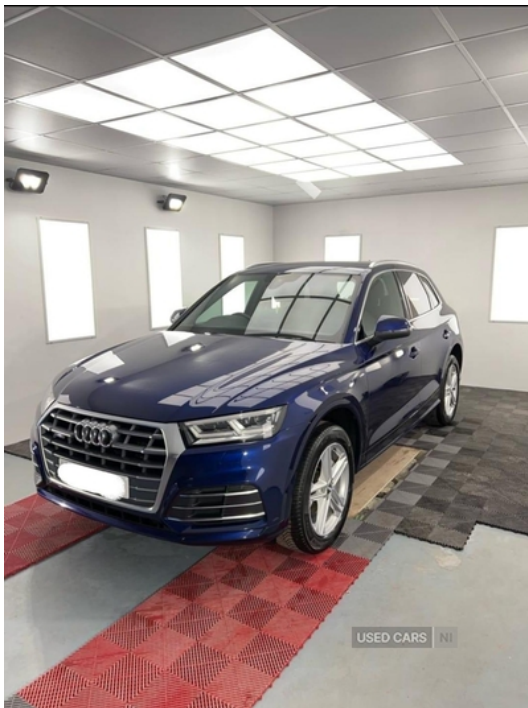


Audi Q5 2.0 TDI Quattro S Line 5dr S Tronic | Mar 2017

£16,950



Mint Audi Q5
Top spec
Fully serviced
Very well cared jeep
Northern Ireland registered Jeep from 2018
Finance available

Vehicle Features

2 USB ports, 2 X SD card slot, 3 point seatbelts on all seats, 3 rear headrests, 3 zone climate control, 40:20:40 split folding rear seat, ABS, Acoustic windscreen, Aluminium sill plates, Audi connect, Audi drive select, Audi Pre sense collision avoidance, Audi smartphone interface, Auto dimming rear view mirror, Auxiliary input socket, Black cloth headlining, Black high gloss front air inlet in matt aluminium effect, Body colour bumpers, Body colour door mirrors, Body colour rear diffuser insert, CD player, Chrome exhaust tailpipe, DAB Digital radio, Diesel particulate filter, Driver and passenger airbags, Driver and passenger side airbags, Driver information centre with colour display in instrument panel, Electrically adjustable and heated door mirrors, Electric headlight adjustment, Electric pack A - Transporter, Electric power steering, Electromechanical parking brake, ESC with ASR, ESP, First aid kit, Front/rear floor mats, Front and rear electric windows, Front centre armrest with 12v socket, Front fog lights, Front passenger airbag deactivation, Front sports seats including electric lumbar support, Headlight range control, Headlight washers, Height adjustable driver's seat, Hill descent control, Honeycomb side air inlet in titan black, Illuminated door sills, Isofix front passenger and rear seat

Miles:	100000
Fuel Type:	Diesel
Transmission:	Semi-Automatic
Colour:	Blue
Engine Size:	1968
CO2 Emission:	133
Tax Band:	E (£195 p/a)
Body Style:	Sport utility vehicle
Insurance group:	29E
Reg:	YE17UJC

Technical Specs

DIMENSIONS	
Length:	4663mm
Width:	1893mm
Height:	Not Availablemm
Seats:	5
Gross Weight:	2440KG
Max. Loading Weight:	745KG
PERFORMANCE & ECONOMY	
Fuel Consum. (Urban Cold):	52.3MPG
Fuel Consum. (Extra Urban):	57.6MPG
Fuel Consum. (Combined):	55.4MPG
Fuel Tank Capacity:	65L
Number Of Gears:	7 SPEED
Top Speed:	135MPH
Acceleration 0-100 km/h:	7.9s
Engine Power BHP:	187.7BHP

preparation, Jack and tool kit, Light and rain sensor for auto activation of lights and windscreen wipers, Load compartment cover, Loading sill protector in stainless steel, Locking wheel bolts, Matt brushed aluminium inlays, Matt selenite silver door inserts, MMI radio plus with 7" colour MMI screen and MMI controller, Perforated leather gearknob, Power tailgate, Privacy glass with front acoustic glazing, Reach + rake adjustable steering column, Rear diffuser strip in matt aluminium silver, Rear spoiler, Rear wiper, Remote central locking, Removable luggage compartment floor, Removable net partition, Roller blind loadspace cover, Seat belt force limiter, Selenite silver underbody guard, Service interval indicator, Stainless steel pedals, Sunvisors with vanity mirrors, Thatcham category 1 alarm + immobiliser, Traction control, Twilight grey matt radiator grille with matt aluminium horizontal chrome struts, Tyre pressure monitor, Under hood engine cover, Voice control system, Warning triangle